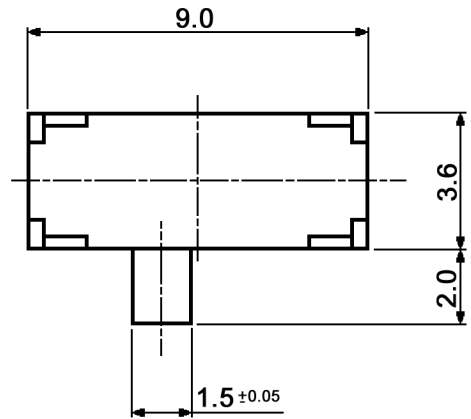
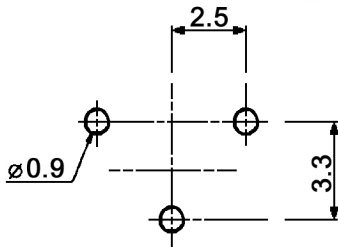


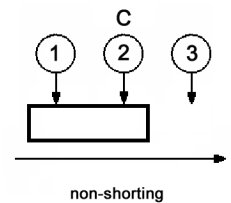
HOLE LAYOUT TOP VIEW $\oplus 0.05$



Specifications:

- Contact rating: 0.2A, 12V DC
- Contact resistance: 50mOhm max.
- Insulation resistance: 100MOhm min. at 500V DC for 1 minute
- Dielectric strength: 500V AC (50/60Hz, 2mA)
- Operating temperature: -10°C to +60°C
- Mechanical life: 5 000 cycles
- Electrical life: 5 000 cycles
- Operating force: 250 +/-150gf
- Soldering conditions: 260 +/-5°C, 5 +/-1sec.
- Material: Terminal: brass strip, silver plated
Cover: stainless steel, washing
Slider / case: PA, black
Contact plate: stainless steel, silver plated

CIRCUIT DIAGRAM
C: COMMON PIN
BOTTOM VIEW



Tolerances: up to 10: ±0.2mm above 10-50: ±0.3mm	Date	Name
	11/12	dr

MMP 121-R

knitter-switch

30 27 42

Page

1/1

Modifications	Date	Name
---------------	------	------